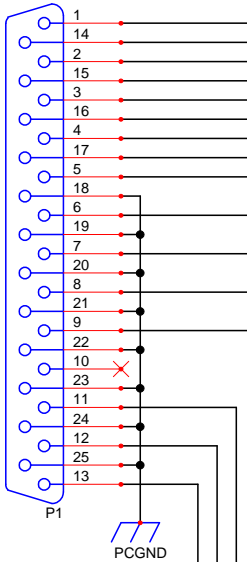


Spindle, axis enables, and auxiliary relays require output low.
If cable is disconnected (floating) they are pulled high and stop.

CONNECTOR_DB25

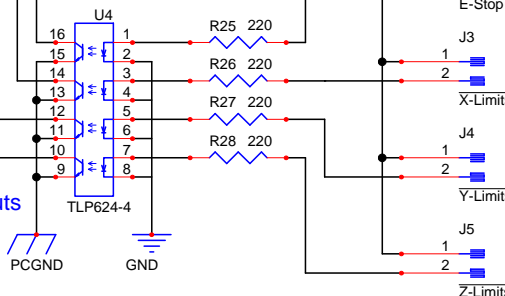


Cant decide if 1N4148 diodes would do any good against ESD since there are already resistors on each trace.

Port inputs set high supplies 5 volts

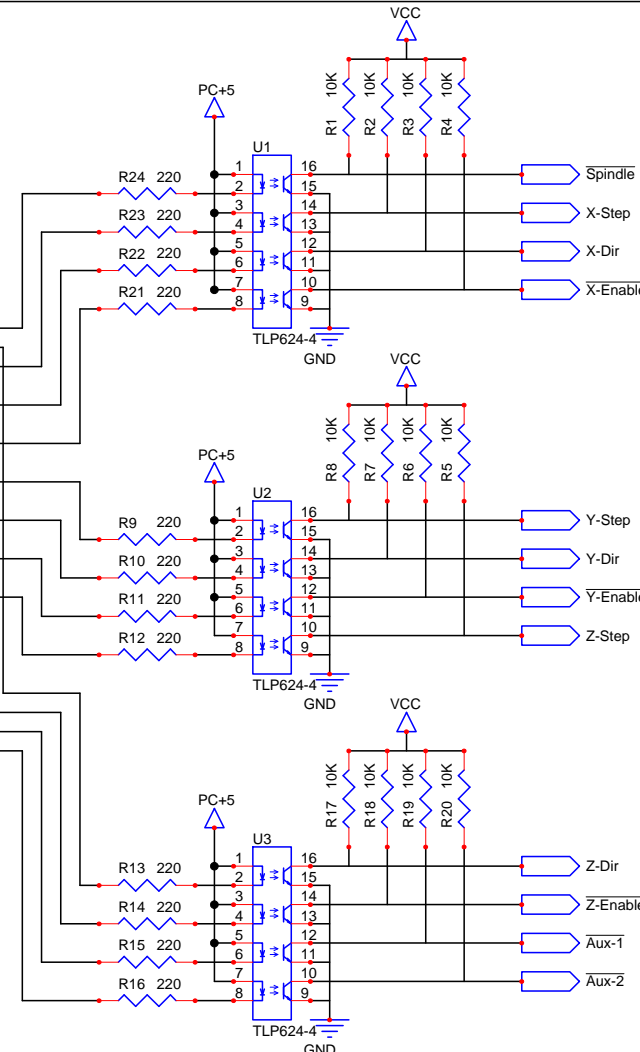
Unknown: Are port inputs internally current limited?

Inputs



All switches normally closed.

Port gets input high when disconnected
E-Stop hit, or axis hits limit.



E-Stop connected to a pair of normally open relays that are held closed when E-Stop not active. Turns off power to spindle and steppers when E-Stop hit or disconnected.

Pat Meloy			
Title:	Parallel port optoisolation for CNC controller		
Size:	A	Project:	A3977 CNC Controller Root.sch
Date:	April 8, 2004	Sheet:	1 of 1
		Revision:	1.0